

# Constructions & Cognition

Sechste Internationale Konferenz der Deutschen Gesellschaft für Kognitive Linguistik  
an der Friedrich-Alexander-Universität Erlangen-Nürnberg

## Final programme

01 October 2014

Monday 29th September	
11.00 – 18.00	Pre-conference Workshop <i>Stefan Evert</i> : Statistics for linguists – an introduction with practical exercises (Bismarckstraße 12, ground floor)
14.30 – 19.00	Registration Conference Office (Kollegienhaus, Universitätsstraße 15, ground floor)
16.00 – 18.00	Pre-conference Panel Optionality in Argument Structure Constructions <i>Adele Goldberg – Thomas Herbst– Anatol Stefanowitsch</i> Room B (Kollegienhaus, Universitätsstraße 15, ground floor)

Tuesday 30th September				
from 8.15	Registration Conference Office (Kollegienhaus, Universitätsstraße 15, ground floor)			
8.45 – 9.00	Welcome			
	A 1 MEANING Chair: Milena Bäcker	B 1 METAPHOR Chair: Carolin Ostermann	C 1 PHONOLOGY Chair: Thomas Maisel	D 1 CONSTRUCTIONS Chair: Kerstin Fischer
9.00 – 9.30	A11 <i>Katerina Haralambopoulou</i> Eki pu: An instance of subjectivity and subjectification	B11 <i>Larisa Erofeeva</i> Das metaphorische Modell des Konzeptes SEELE im poetischen Weltbild von R.M. Rilke	C11 <i>Maria Alm</i> Intonation in the sentence type constructions: The example of declarative questions	D11 <i>Beate Hampe</i> Where/when valency grammar and construction grammar meet
9.30 – 10.00	A12 <i>Martin Thiering</i> Cognitive Maps of Landmark Orientation	B12 <i>Krzysztof Sakowski</i> Untersuchungen zur Struktur onymischer Metaphern bei Ehrendelikten am Beispiel polnischer und deutscher Gerichtsurteile	C12 <i>Nadja Kerschhofer-Puhalo</i> Factors affecting form-function pairing in vowel perception	D12 <i>Doris Schönefeld</i> Non-finite clause complementation: object complement constructions
10.00 – 10.30	A13 <i>Nina Reshöft</i> Motion, Vision and Speech: A cross-linguistic study <b>cancelled</b>	B13 <i>Anna Andreeva</i> Metapher als diskursives Konzeptualisierungsmittel im Spannungsfeld zwischen der Sprache, Kognition und Emotion	C13 <i>Alexander Kalkhoff</i> Konstruktionen in einer Kognitiven Phonologie <b>cancelled</b>	D13 <i>Tor Arne Haugen</i> What can adjectives tell us about the nature of valency?
10.30 – 11.00	A14 <i>Liane Ströbel</i> How do we conceive and store actions and which parameters are at play?	B14 <i>Nedas Jurgaitis</i> Konzept KRISE im deutschen und litauischen öffentlichen Diskurs	C14 <i>Mathilde Hutin</i> Can release burst be responsible for epenthesis and what does it imply about our linguistic representations?	D14 <i>Thomas Herbst</i> Why it would be wrong to assume that generalizations apply generally - a few remarks about particle and non-finite constructions
11.00 – 11.30	Coffee			
11.30 – 12.30	Plenary 1: <i>Hans-Jörg Schmid</i> Entrenchment and conventionalization: testing some predictions of the model against historical data			
12.30 – 14.00	Lunch break			

	A 2 MEANING Chair: Irene Mittelberg	B 2 METAPHOR Chair: Olaf Jäkel	C 2 MORPHOLOGY Chair: Franziska Günther	D 2 CONSTRUCTIONS Chair: Doris Schönefeld	E 2 LANGUAGE LEARNING Chair: Anke Lenzing
14.00 – 14.30	<b>A21</b> <i>Till Woerfel</i> Intra-typological variation in similarity judgments of mono- and bilingual children– rethinking relativistic effects in memories for motion	<b>B21</b> <i>Tuomas Huomo</i> "With her legs two weeks ahead of the rest of her": Time, blending, and temporal frames of reference	<b>C21</b> <i>Stefan Hartmann</i> Erlangen - or Erlangung? Competing Word-Formation Patterns in the History of German	<b>D21</b> <i>Peter Uhrig</i> Why the <i>Principle of No Synonymy</i> is overrated	<b>E21</b> <i>Ursula Kania</i> Indirect speech acts and construction grammar? what developmental data can tell us
14.30 – 15.00	<b>A22</b> <i>Steven Schoonjans</i> Modal Particle Meanings: New Insights from Gesture Research	<b>B22</b> <i>Daniel Reisinger</i> Peeking through the Haze: the CLOUD as a Source for Conceptual Metaphors	<b>C22</b> <i>Christina Sanchez-Stockhammer</i> Spaces, hyphens or 'nothing' – Are English compound spellings cognitively plausible constructions?	<b>D22</b> <i>Kerstin Fischer</i> Is there a modal particle construction?	<b>E22</b> <i>Michael Pleyer &amp; Stefan Hartmann</i> Assessing the Development of Construal Operations in Corpora
15.00 – 15.30	<b>A23</b> <i>Helena Larsen</i> English and German Modal Particles Index Aspects of Situated Cognition	<b>B23</b> <i>Anke Beger</i> Metaphor and cognition: How metaphors are used in a college lecture in order to reason about concepts of the mind	<b>C23</b> <i>Martin Hilpert</i> Constructional change in noun-participle compounding	<b>D23</b> <i>Karoline Kaaden &amp; Holger Diessel</i> Form follows function. Investigating adverbial polyfunctionality	<b>E23</b> <i>Tanja Angelovska, Seda Yilmaz-Wörfel, Nikolas Koch, Angela Hahn &amp; Maria Riehl</i> "He has an organ donor card, so accepted his wife that..."- Cognitive explanations for the cross-linguistic influences in L1 Turkish, L2 German and L3 English
15.30 – 15.50	<i>Coffee</i>				

	A 3 MEANING Chair: Martin Thiering	B 3 METAPHOR Chair: Martin Hilpert	C 3 MORPHOLOGY Chair: Christina Sanchez-Stockhammer	E 3 LANGUAGE LEARNING Chair: Susen Faulhaber
15.50 – 16.20	A31 <i>Kristina Milardovic &amp; Anatol Stefanowitsch</i> Sex, Grammatical Gender and Morphological Transparency	B31 <i>Timo Lothmann</i> Off in My Face He Doth His Banner Rest <sup>o</sup> : War as a Pervasive Metaphor in Early English Literature	C31 <i>Katja Roller</i> On the relation between salience and frequency in morphosyntax: The case of Welsh English	E31 <i>Yevgen Matuskevych, Afra Alishahi &amp; Ad Backus</i> Isolating second language acquisition factors: A computational model of bilingual construction learning
16.20 – 16.50	A32 <i>Jeroen Vanderbiesen &amp; Tanja Mortelmans</i> Quoportive wollen as Evidence For a Category of Referral	B32 <i>Alexey Yavetskiy</i> The Metaphor of Metonymy: Spatial Closeness and Inalienability in Grammar	C32 <i>Svetoslava Antonova-Baumann</i> Testing effects of analyzability on compounds: a cross-linguistic degree of semantic transparency: Are the components and their meanings recognised and accessed? <b>cancelled</b>	E32 <i>Florent Perek &amp; Adele Goldberg</i> Construction learning relies on usage and function: an artificial language learning study
16.50 – 17.15	<i>More coffee and posters</i>			
17.15 – 18.15	DGKL Business Meeting			
18.15 – 19.15	Plenary 2: <i>Ron Langacker</i> Nominal Grounding and English Quantifiers Aula (Schloss, second floor)			
from 19.30	Welcome by FAU Vice President Prof. Dr. Antje Kley Reception (Schloss, first floor), sponsored by John Benjamins and Weingut Wirsching			

Wednesday 1st October

	A 4 MEANING Chair: Liane Ströbel	F 4 THEME SESSION MULTIMODALITY	D 4 CONSTRUCTIONS Chair: Beate Hampe	E 4 TEACHING Chair: Susanne Niemeier
9.00 – 9.30	A41 <i>Dylan Glynn</i> Modelling Meaning. A quantified and usage-based approach to the polysemy of /over/	F41 <i>Kurt Feyaerts, Geert Brône, Paul Sambre, Bert Oben, Steven Schoonjans &amp; Elisabeth Zima</i> Accounting for Multimodality in Construction Grammar	D41 <i>Juliana Goschler</i> The Prepositional Attribute Construction: A Construction Grammar Approach	E41 <i>Tatiana Serbina</i> Translating constructions from English to German: combining corpus and experimental evidence
9.30 – 10.00	A42 <i>Lyudmila Zapevalova</i> Category of Singularity as a family of constructions	F42 <i>Francesca Citron &amp; Adele Goldberg</i> Sweet! Taste metaphors activate gustatory areas and are more emotionally engaging than literal paraphrases.	D42 <i>Andreas Hölzl</i> An alternative analysis of polar questions: The case of Tungusic <b>cancelled</b>	E42 <i>Dorothee Kohl-Dietrich, Constanze Juchem-Grundmann, Wolfgang Schnotz</i> Conceptual motivation as a pedagogical tool for the teaching and learning of verb-particle-constructions with <i>up, down, out</i>
10.00 – 10.30	A43 <i>Thomas Gamerschlag, Wilhelm Geuder &amp; Wiebke Petersen</i> Movement in frames: On German 'steigen' ('rise/climb')	F43 <i>Cornelia Müller &amp; Jana Bressemer</i> The "Negative-Assessment Construction": A multimodal pattern	D43 <i>Hiroyuki Miyashita</i> Two Adjective Experiencer Constructions in German – Constructional differences and their semantics	E43 <i>Sabine de Knop, Paul Sambre &amp; Fabio Mollica</i> The constructional patterns of meteorological events by French-, Italian- and Dutch-speaking learners of German
10.30 – 10.55	<i>Coffee &amp; more posters</i>			
11.00 – 12.00	Plenary 3: <i>Adele Goldberg</i> Constructions & Cognition: a good fit.			

	B 5 METAPHOR Chair: Sandra Handl	F 5 THEME SESSION MULTIMODALITY	D 5 CONSTRUCTIONS Chair: Tor Arne Haugen	E 5 TEACHING Chair: Katrin Schwanke
12.00 – 12.30	B51 <i>Olaf Jäkel</i> The multipurpose tool: The cognitive roles and functions of deliberate metaphors in different contexts	F51 <i>Maarten Lemmens &amp; Julien Perrez</i> Integrating lexis, gesture and discourse in spatial descriptions	D51 <i>Masahiko Ozono</i> Anwendbarkeit der Konstruktion - Ein deutsch-japanischer Vergleich	E51 <i>Philipp Wasserscheidt</i> On Imitation in Adult Bilinguals
12.30 – 13.00	B52 <i>Patty Gadegast, Diana Löffler, Christine Goutrié, Steffi Hußlein &amp; Jörn Hurtienne</i> Supporting Interaction Design Inspired by Force Image Schemas	F52 <i>Steven Schoonjans</i> German modal particles as multimodal constructions	D52 <i>Annette Fahrner</i> A Constructionist Approach to the Classification of the German Pronoun 'es'	
13.00 – 14.00	<i>Lunch break</i>			
14.00 – 14.30	Poster session			
	A 6 MEANING Chair: Thomas Maisel	F 6 THEME SESSION MULTIMODALITY	D 6 CONSTRUCTIONS Chair: Cordula Glass	E 6 TEACHING Chair: Sabine de Knop
14.30 – 15.00	A61 <i>Franziska Günther, Hermann Müller, Hans-Jörg Schmid &amp; Thomas Geyer</i> Constructions in cognitive context: what eye-movements reveal about the nature of meaning	F61 <i>Irene Mittelberg</i> Multimodal existential constructions in German and English	D61 <i>Nicole Hützen</i> Shell nouns in academic writing: a study of disciplinary differences	E61 <i>Alexander Ziem</i> How to kick a ball: Towards a frame- and construction-based dictionary for language learners
15.00 – 15.30	A62 <i>Sandra Handl</i> <i>Not good/not bad</i> – Tracing the meaning construction <i>not ADJ</i>	F62 <i>Alan Cienki &amp; Suwei Wu</i> Types of multimodality in transitive and intransitive constructions	D62 <i>Malgorzata Fabiszak, Martin Hilpert &amp; Karolina Krawczak</i> A corpus-based quantitative approach to mental predicates and their complementation: A cross-linguistic perspective	E62 <i>Carolin Ostermann</i> Describing Particles in Dictionaries. A Cognitive Approach
15.30 – 15.50	<i>More coffee</i>			
16.00 – 17.00	Plenary 4: <i>Friedemann Pulvermüller</i> Conjoined processing of form and meaning of words and constructions			
17.05	<i>Trip to Nuremberg and Kalchreuth</i>			
20.00	Conference Dinner (Kalchreuth) with launch of DGKL Yearbook (aperitif sponsored by de Gruyter Mouton)			

Thursday 2nd October

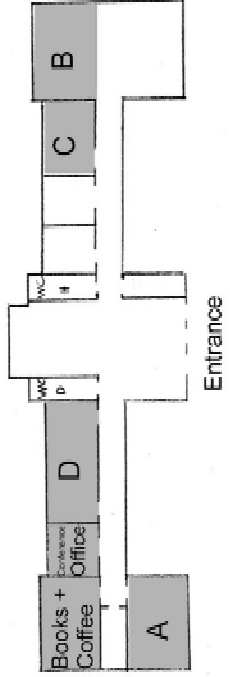
Thursday 2 October	A 7 MEANING Chair: Christina Sanchez-Stockhammer	B 7 PHRASEOLOGY Chair: Brigitta Mittmann	D 7 THEME SESSION ARGUMENT STRUCTURE SPOKEN	E 7 THEME SESSION COGNITION & SLA
8.45 – 9.15	A71 <i>Thanasis Georgakopoulos</i> The priority of Goal in the representation of motion and non-motion events in German and Greek: evidence from corpora	B71 <i>Ana Mansilla</i> Musik und kognitive Linguistik. Kognitive und semantische Aspekte phraseologischer Einheiten für den Bereich musikalischer Komponenten in der deutsch-spanischen Sprache	D71 <i>Arne Zeschel, Nadine Proske &amp; Arnulf Deppermann</i> Argument structure in spoken language – Introduction to the session	E71 <i>Nicole Biedinger</i> Ethnische Unterschiede in den frühen kognitiven Fähigkeiten
9.15 – 9.45	A72 <i>Christian Horn</i> A corpus-linguistic analysis of noun types and determination in German	B72 <i>Natalia Kuznetsova &amp; Uliana Zharkova</i> Das kognitive Modell "Recht" und seine Aktualisierung auf der phraseologischen Ebene	D72 <i>Kris Heylen</i> Analyzing constructional pragmatics: A usage-based study of word order variants in spoken German	E72 <i>Jana Chudaske</i> Kompetenzentwicklung in multilingualen Schulklassen (KEIMS): Sprachliche Kompetenz und kognitive Grundfähigkeit von Drittklässlern
9.45 – 10.15	A73 <i>Olga Butova</i> Ein frame-semantisches Verfahren zur Erforschung kollektiver Wertvorstellungen von Diskursgemeinschaften im Rahmen der Linguistischen Mentalitätsgeschichte <b>cancelled</b>	B73 <i>Andreas Trotzke &amp; Jan-Wouter Zwart</i> A constructionist approach to idiom formation and interpretation in current minimalism	D73 <i>Yanan Hu, Dirk Geeraerts &amp; Dirk Speelman</i> On lexical dynamics: Onomasiological choices for analytic causative constructions in spoken Chinese. <i>Presented by Kris Heylen.</i>	E73 <i>Anja Steinlen &amp; Thorsten Piske</i> Kognitive Fähigkeiten und Bilingualer Unterricht: Ein Selektionsvorteil?
10.15 – 10.45	<i>First coffee</i>			
	A 8 HISTORY Chair: Michael Pleyer	B 8 PHRASEOLOGY Chair: Michael Klotz	D 8 THEME SESSION ARGUMENT STRUCTURE SPOKEN	E 8 THEME SESSION COGNITION & SLA
10.45 – 11.15	A81 <i>Toshiko Yamaguchi</i> Personal pronouns in the history of Japanese: Beyond (inter)subjectivity	B81 <i>Ruth Hoffmann</i> Delocutivity revisited: Insides from research on formulaic language <b>cancelled</b>	D81 <i>Arne Zeschel &amp; Nadine Proske</i> <i>Kommen</i> and <i>gehen</i> in spoken German	E81 <i>Sandra Kristina Gebauer &amp; Jens Möller</i> Immersionsunterricht und Schülerleistungen: Exekutivfunktionen als potentieller Mediator <b>cancelled</b>
11.15 – 11.45	A82 <i>Yoshihisa Nakamura</i> Cognition and Constructions in the Evolution of Language	B82 <i>Natalia Levshina</i> Quite diverse: a corpus-driven analysis of quite + ADJ in twenty varieties of English	D82 <i>Wolfgang Imo</i> „Wollte nur mal schauen, ob man weiß, wie <i>ob</i> -Sätze funktionieren“	E82 <i>Anke Lenzing, Jana Roos &amp; Howard Nicholas</i> Interrogating the role of formulaic sequences in early instructed SLA

11.45 – 12.15		<b>B83</b> <i>Daphné Kerremans</i> Collocations as cognitive allrounders: Corpus-based evidence from neologisms	<b>D83</b> <i>Julia Kaiser</i> „Ich will hier weg, das muss da rein“: Argumentstrukturen deutscher Modalverben in der gesprochenen Sprache	<b>E83</b> <i>Katrin Schwanke</i> Aufmerksamkeit und bilingualer Unterricht zu Beginn der Sekundarstufe I
12.15 – 12.45		<b>B84</b> <i>Pertti Hietaranta</i> Why Is Mr Murphy So Successful: A Cognitive Look at the Wrong Choices You Wanted to Avoid but Made Anyway	<b>D84</b> <i>Elena Smirnova &amp; Gabriele Diewald</i> Usage restrictions on the dativus iudicantis in spoken and written language	<b>E 84</b> <i>Cordula Glass</i> Did I commit a mistake? - Kollokationen im Erst- und Zweitspracherwerb: Eine konstruktionsbasierte Studie.
12.45 – 14.15	<i>Lunch break</i>			
14.15 – 15.15	Plenary 5: <i>Ewa Dabrowska</i> Individual differences in language attainment: Comparing native and non-native speakers.			
15.15 – 16.30	Panel Discussion Cognition and Construction and final discussion		Cognitive Linguistics in the Classroom a seminar for Franconian teachers <i>Thorsten Piske</i>	
16.30 – 16.45	<i>Last chance to grab some coffee</i>			
17.00	<i>Trip to Iphofen</i>			

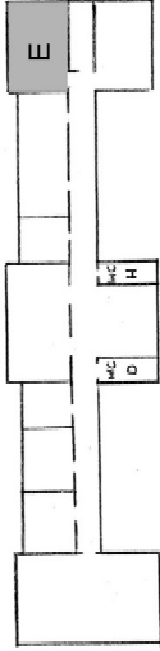


Schloss  
Plenary  
(Langacker)  
2nd Floor

### Ground floor



### First floor



### Second floor

